



SAVAGE X 4.6 **TOUGHER STRONGER FASTER**

Big Block

The new Savage outgrows its former version.
The Savage X 4.6 debuts with exceeding performance from new F4.6 engine (.28 size)!

The HPI Savage X 4.1 RTR, the best-selling Savage, went through with evolutionary steps and the Savage X 4.6 RTR is now ready to show its exceeding performance! With the newly developed F4.6 engine (.28 size), the displacement of the Savage X 4.6 RTR is about 12% bigger and the Savage X 4.6 RTR comes with the aluminum diff unit and dual disc brake to handle the strong engine power. The Savage X 4.6 RTR is the most powerful and toughest giant truck Savage ever.

SAVAGE SIZE!



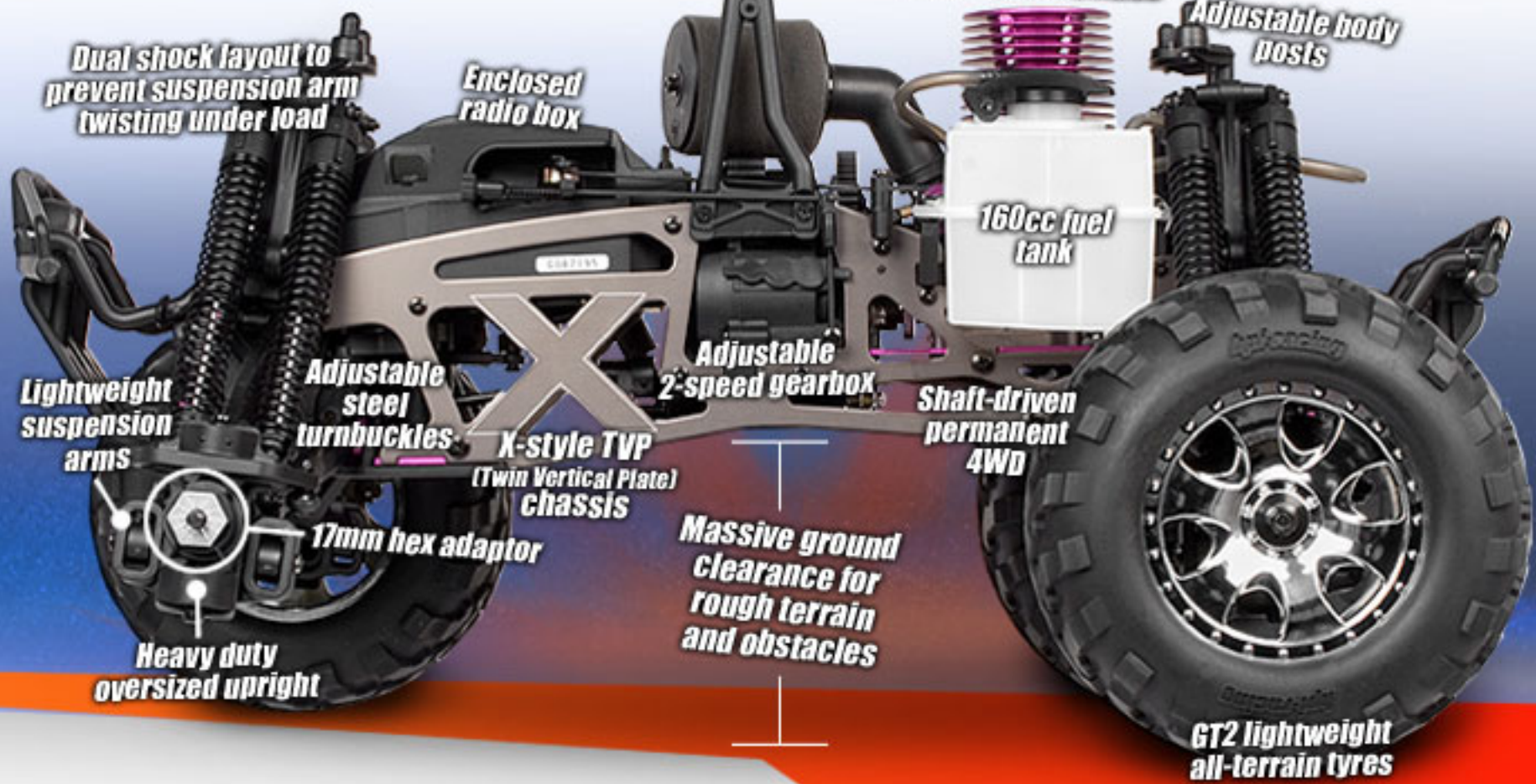
F4.6 **Big Block** POWER!

SPECIFICATION

Glow Plug : R5
Displacement : 4.6cc
Bore : 18.68mm
Stroke : 16.6mm
Power : 2.9HP@32,000rpm
Carburetor : F1-7.5 (Composite 7.5mm)



F4.6 **Big Block** engine pre-installed

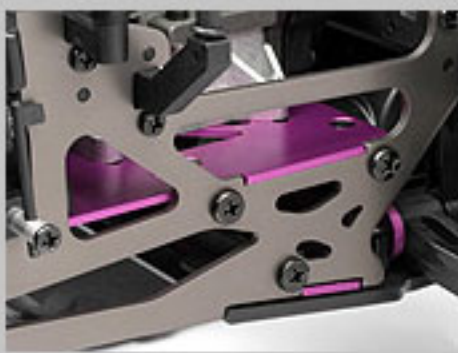




SAVAGE X 4.6 Big Block UP CLOSE



Nitro Star F4.6 2.9hp 8-port rear-exhaust engine is derived from off-road racing engines & gives you enough horsepower to get over 45mph!



Stronger TVP (Twin Vertical Plate) chassis for improved durability and strength at high speeds.



7075-series 2.5mm aluminium engine plate is thicker for more resistance to bending under stress.



Dual-stage air filter to protect the engine from dirt and fine dust.



Adjustable dual disk fade-resistant brake set for incredible stopping power.



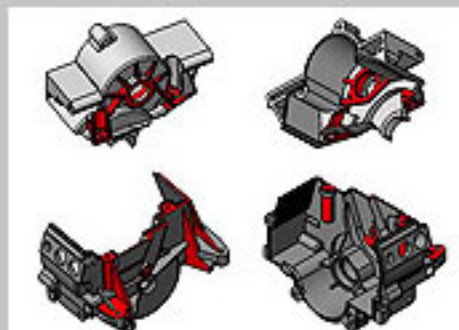
Aluminium diff cases to prevent spreading of the internal gears.



Optimised clutch bells engage spur gear better for more efficient power transfer.



Steel clutch bell spacer replaces brass insert and works with ball bearings to give maximum transmission efficiency.



Increased webbing inside and out of central gearbox for greatly increased durability in the rough stuff.



Stronger front and rear skidplates and bumpers resulting from additional material added in key areas.



Adjustable slipper clutch equipped with a new, more durable slipper pad for greater life.



Pre-trimmed & painted Nitro GT-2 bodyshell supplied in new paint scheme with decals pre-applied, lets you get going in style quick!



Full-time shaft driven 4WD system for maximum grip, power and grunt!



Wide-track suspension gives you smooth driving and great handling - nearly 17 inches (43cm) wide!



Eight long-stroke oil-filled shock absorbers provide confidence over the jumps and on big-air landings.



Adjustable 2-speed transmission set with hardened metal gears gives you great acceleration and top speed!



Massive 160cc fuel tank for long run times and huge amounts of bashing and racing fun.



X-style clipless radio box protects the electronics from splashes, dirt and more.



Lightweight suspension arms improve suspension action and give great response in corners and over bumps.



Full set of rubber-sealed ball bearings for maximum efficiency and power from the engine.



Stiff racing springs for superb driving feel and best suspension action. Adjustable turnbuckles.



Hardened 4-gear diff setup can handle the abuse of high-horsepower engines like the F4.6.



Cam-type servo saver steering arms improve the efficiency and power of the steering servo.



Radio box features openings for a battery charging jack and #308 illuminated Battery Level Indicator (not included).



The low centre of gravity chassis drops the engine, centre gearbox and radio 5mm lower than the Savage 25, resulting in better handling and faster lap times.



Large 17mm metal alloy hex hubs hold the wheels securely and prevent the hex stripping in the wheels under heavy load applications.



New lightweight GT-2 tyres with aggressive tread pattern for excellent all-terrain traction and long tyre lifetime. To add cool looks, the GT-2 tyres are mounted and pre-glued on Chrome Warlock wheels.



Included is an optional nylon roll cage which will help protect your engine and heat sink. It can be mounted with almost every Savage bodyshell but requires additional cutting on your bodyshell. (pictured here on a Savage X RTR)

SAVAGE X DIMENSIONS



Length:	534 mm
Width:	427 mm
Height:	254 mm
Wheelbase:	336.5 mm
Tyres:	159 x 85.5 mm
Suspension travel:	152 mm
Engine:	4.6 cm ³
Transmission:	2-Speed
Drivetrain:	Full-Time 4WD



SAVAGE X 4.6 RTR

#869 SAVAGE X 4.6 RTR NITRO GT-2